



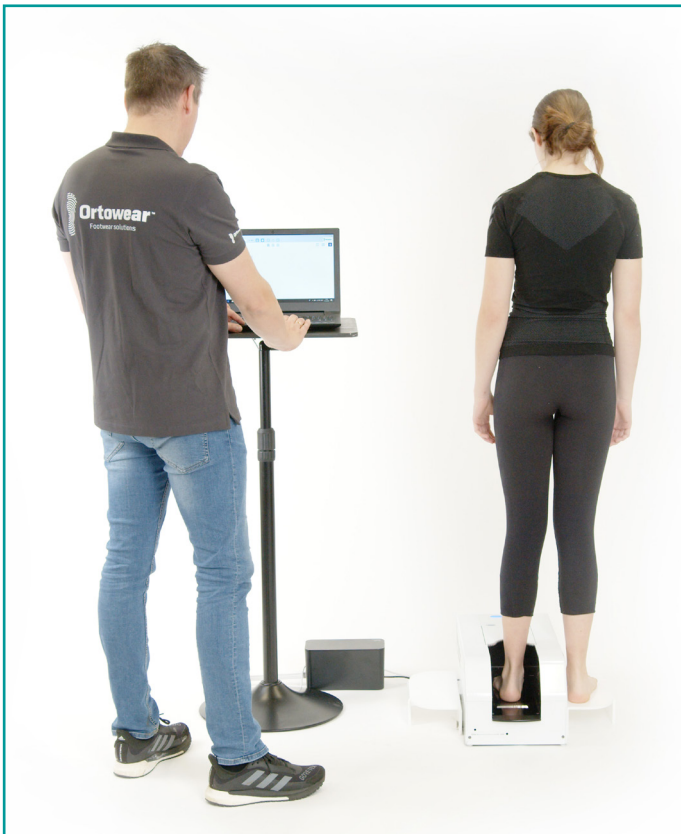
Ortowear™

Footwear solutions

3D Laser Full Foot Scanner from Ortowear (3DF2)

FEATURES

- 3,2 sec. for 3D scan (one direction). 7,8 sec. for surface texture (two directions)
- Compact (15 kg)
- Normal indoor lighting, no light shield required
- 3D (STL/WRL), 2D color (plantar and heel)
- Large scan area
- No calibration required
- Easy to use
- Compatible with all larger CAD/CAM systems
- Auto 28 Landmark and 32 Measurements
- Auto diagnostic for arch, toe and heel
- Foot report and annotation report
- FTP send order to shoe/insole fabrication



Contact

Ortowear, Mikkerten 21, DK-6715 Esbjerg N
Phone +45 4693 468



Ortowear™

Footwear solutions

MATERIALS TO SCAN

Objects: Plantar foot, un-loaded, partial loaded, full load, foam boxes, casts (positive and negative)

Dimensions: Max. 330(L) X 130(W) X 115(H) mm

Min. 40 (L) x 18 (B) x 0 (H) mm

Max load: 130 kg

Not possible to scan: Shiny, transparent and black objects

SPECIFICATIONS

Dimensions: 520 (L) x 270 (W) x 220 (H) mm

Power supply: 110-240V 50/60 Hz

Weight: 10 kg

3D scan speed: 3,2 sec.

3D with texture: 7,8 sec.

Output data: STL, VRML

Accuracy:

3D accuracy: 1.0 mm

One year limited warranty

Operational environment:

Temperature: 15-40 °C. Humidity: 30-70 %.

PC DEMANDS

Optimal PC specifications

Computer I7 CPU, 8G Ram, Win7/8//10

USB 3.0 port required.

AC 100-240V, 36W peak power consumption

